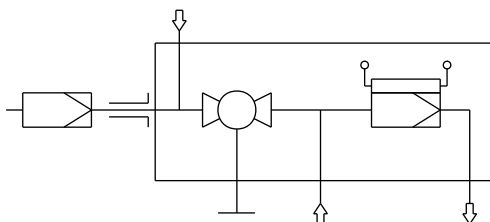


# Sample gas probe GAS 222.21 ANSI/CSA

## Flow Diagram



## Description:

- Heated sample gas probe with shut off valve in-situ and/or downstream filter and weather protection shield
- Downstream filter element can be replaced without tools
- Effective insulation and protection shield
- Electronic heater up to 200°C with low/high temperature alarm and display
- Dust concentration up to 2g/m<sup>3</sup>
- Not for hazardous areas
- An application with various options you will find in data sheet "sample gas probes GAS 222" DD461000 page 4.
- C-US and CSA approval.



## Technical Data:

- Material: 1.4571, ball valve 1.4408
- Seals: PTFE/graphite/1.4404 and see filter element
- Operating temperature: max. 200°C
- Max. working pressure: 6 bar
- Voltage: 230 V, 2,0 A, 50/60Hz  
or 115 V, 3,8 A, 50/60Hz,
- Temperature range: +50 to +200°C
- Alarm: adjustable  $\pm 5 \dots 30K$  from set point factory set 15K current max. 1A
- Protection class: IP54
- Ambient temperature: -20 up to +70°C (may be limited by options)

## Order information: Base units:

- GAS 222.21ANSI/CSA 230V p/n 4622221C
- GAS 222.21ANSI/CSA 115V p/n 4622225C

In combination with heated extensions (see accessories) to add a "G" to p/n. for example: 4622221CG.

## Options:

To customize the base unit to meet the needs of any application, please refer to data sheet DE461099 "Accessories for Gas Sample Probes".

- Various probe tubes
- Heated/unheated extensions
- Filters
- Calibration gas port
- Pneumatic actuator
- Blowback
- Blowback control unit

For general information see data sheet "Gas Sample Probes GAS 222" DE461000.

